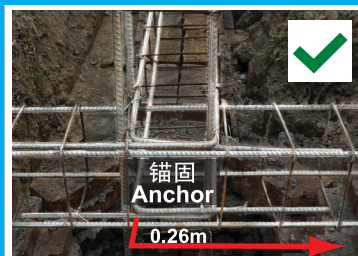


# 地震中保护你家园的安全！ You can help keep your families safe from earthquakes!

## 圈梁和柱的钢筋搭接 Connections Between Tie Columns and Bond Beams

搭接钢筋时要保证有足够的锚固长度与有足够的箍筋在加密区里

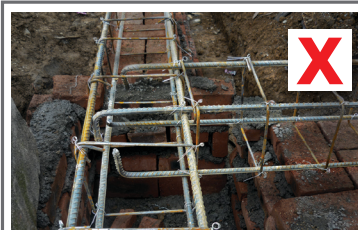
When tying the tie columns and bond beams together, care must be taken to ensure adequate anchor length and additional stirrups near every joint.



锚固要达0.26m长，相对弯曲正确。  
Anchors should be at least 0.26m long and turned toward each other.



锚固长度过短。相反弯曲同样满足规范要求，但建议用相对弯曲更安全，如上图。  
Anchors are too short. Although this connection meets the requirements in Sichuan, it is better to make the anchors face each other as pictured above.

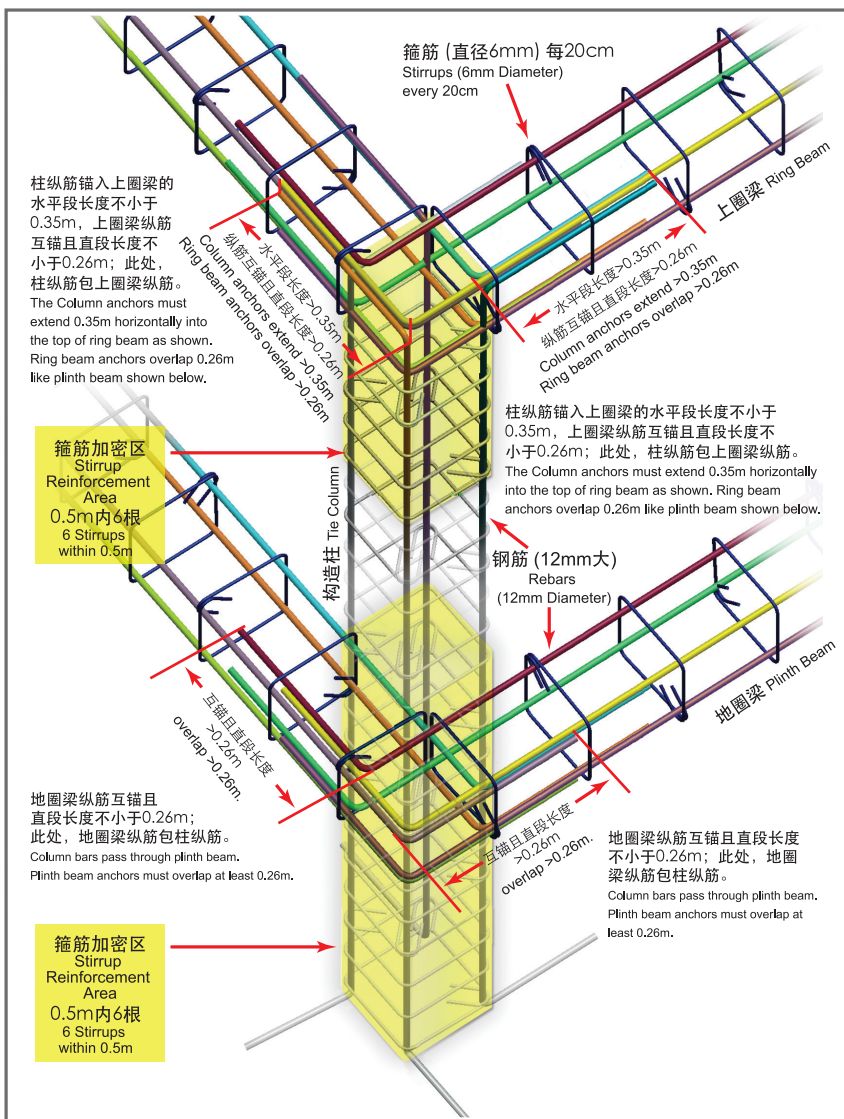


锚固过短，没绑到圈梁上。  
Anchors are too short, and the beams are not tied to each other.



搭接长度过短。依据四川省农村居住建筑抗震设计技术图集(2008修订版)规定，直径12mm的热轧螺纹钢搭接长度为0.57m，直径14mm的热轧螺纹钢搭接长度为0.66m。

Overlap is too short. In Sichuan the splice length must be at least 0.57m for 12mm diameter ribbed steel and 0.66m for 14mm diameter ribbed steel bars to meet requirements.

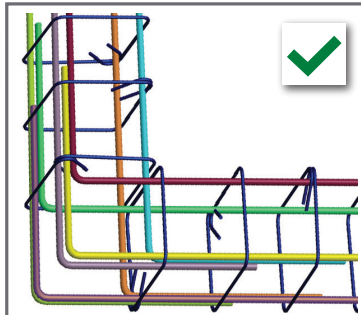
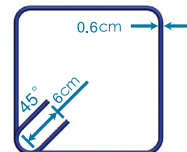


柱的钢筋至少要高于墙顶0.56m，用于搭接上圈梁。  
Steel reinforcement in the tie column should extend at least 0.56m above the top of the wall to have enough anchor length.



钢筋太短，圈梁与柱子会容易脱离。  
Steel reinforcement is too short; the ring beam and tie column may easily separate.

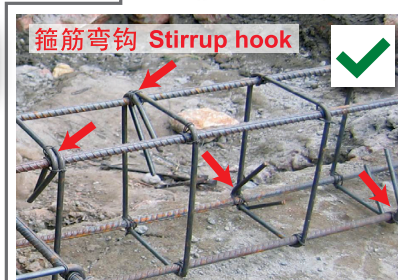
箍筋直径为6mm大，箍筋帮扎弯钩至少6cm长，并向内45度弯曲。  
Use 6mm diameter bars for stirrups with hooks at least 6cm long, turned inward at a 45 degree angle.



最好的方式：8根钢筋全锚固到外筋上。  
Best when all 8 rebars are anchored to the outside bars.



转角无锚固。  
The corner lacks any anchor.



加密区外箍筋间距为20cm，弯钩不要放在同一纵筋上，应错开放置，如上图。  
Away from the joint, stirrup spacing should be no more than 20cm, and stirrup hooks should be rotated.